

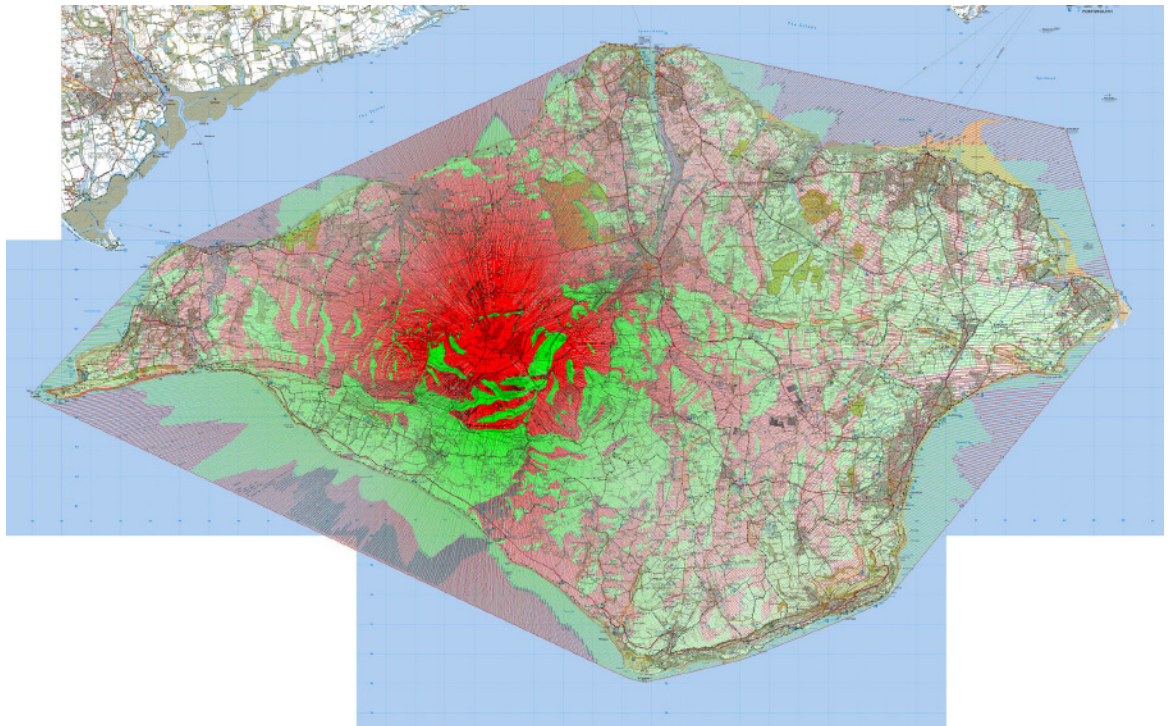
Visualisation Zone of Visual Impact Analysis

Sometimes a project has the potential to change the landscape over a vast area. One such was the extension to an existing communications mast at Rowridge on the Isle of Wight.

Whilst the existing mast was visible from quite a large proportion of the island, the proposed extension would extend the range over which it could be seen quite dramatically.

Brunel Surveys Ltd. were asked to produce several verified views from particular locations and then, after these had been completed, we were asked to see whether we could help with an image that would help show exactly where across the island the mast would be visible from.

Working with landform data from Ordnance Survey, and some specialist software, we were able to produce images that covered the whole of the Isle of Wight, detailing exactly where the mast would be visible from, even allowing for where built-up areas or woodland would obstruct the view.



Brunel Surveys Ltd

Land and Measured Building Surveyors, Photomontage and 3D Visualisation
Tel: 01793 784700 www.brunelsurveys.com